

ASSET barriers offer an excellent, strong and sound, protection system against accidental damage to property from impacts.

On private and public car parks, around industrial, commercial or public buildings, in warehouses and delivery bays, on private roads there are endless situations where ASSET barriers can significantly improve safety.



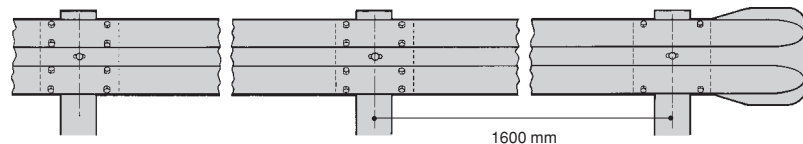
STANDARD FLEX-BEAM GUARDRAIL

Flex-Beam designed for strength, durability and resilience. It has sufficient beam and joint strength to absorb heavy impacts.

Positive splices between the beam lengths are achieved with a 318mm wide lap using specially designed bolts. All rails are assembled with the overlap in the direction of the adjacent traffic flow so that vehicles cannot collide with an exposed end-of-rail.

All rails are provided with additional mid-span bolt holes to cater for extra posts where additional strength is needed at particularly hazardous locations, or where excessive movement of the rail cannot be tolerated.

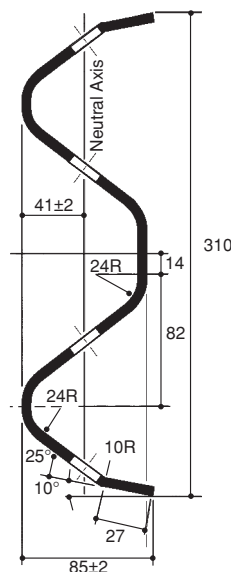
STANDARD POST CENTRES



Dimensions and Physical Properties

| Length m. | Thickness mm. | Weight Kg/panel | Sectional Area mm ² | Section Modulus mm ³ | Material Specification |
|-----------|---------------|-----------------|--------------------------------|---------------------------------|---|
| 1.6* | 3.0 | 23.0 | 1427 | 25330 | Steel to BS EN 10025 Grade 430A galvanised to BS 729 |
| 3.2 | 3.0 | 42.4 | 1427 | 25330 | Steel to BS 1449 Section 1.2.1991 Grade HR4 galvanised to BS 729 |

* 1.6m length can be “adjusted” to account for small changes in floor angle.



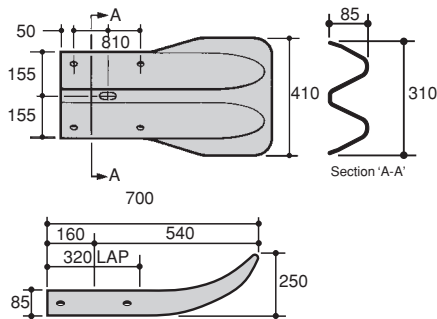
The Flex-Beam is designed to be flexible. It will offer an effective buffer while minimising damage to vehicles. It is hot-dip galvanised to BS729 for a maintenance free life and comes with optional safety plastic end caps. These are highly visible and will prevent accidental injury to pedestrians.

FLEX-BEAM

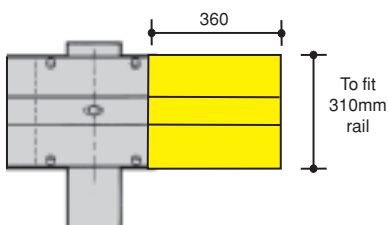
Terminal End Type 'A'



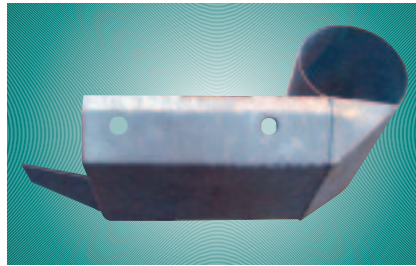
Terminal sections type 'A' are made of strong ductile steel. They make the transition from a deeply corrugated section to a flat curve and are used primarily at exit ends of parking spaces.



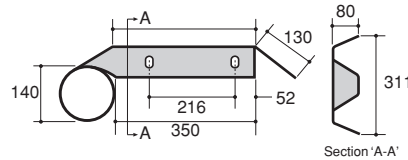
Plastic End Cap



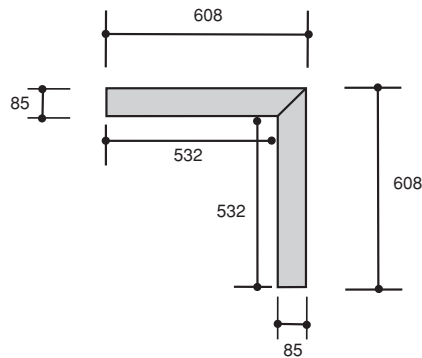
Terminal Swirl End



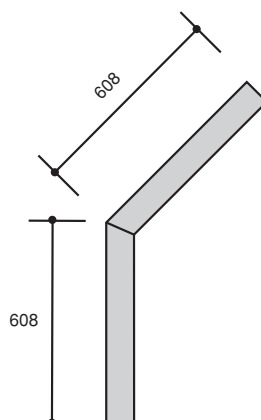
In pedestrian situations allows safer passage in front of and behind barriers



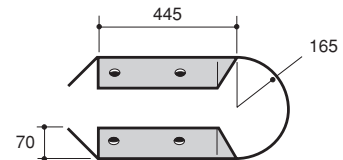
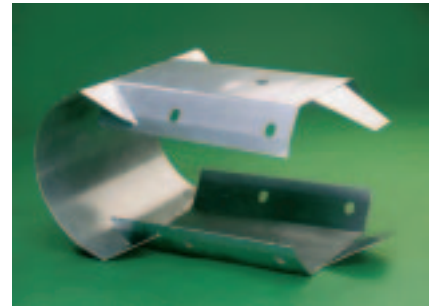
External or Internal Corner Connector - Rigid



45° External or Internal Corner Connector - Rigid



External Corner Connector - Flexible



Internal Corner Connector - Flexible

