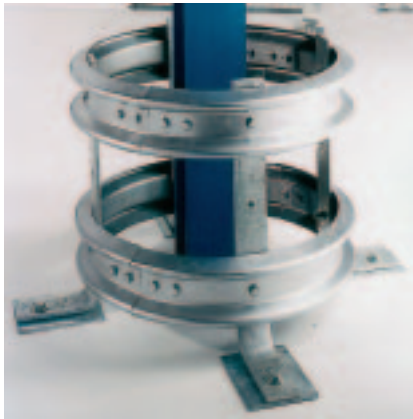
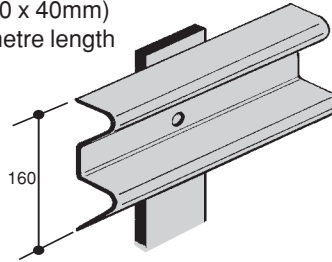


A range of Warehouse rails have been designed to provide protection from light industrial vehicles such as fork lift trucks.

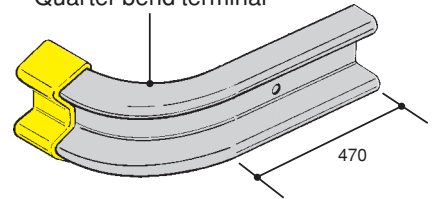


WAREHOUSE RAIL SYSTEM

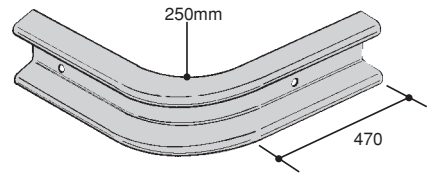
(160 x 40mm)
4 metre length



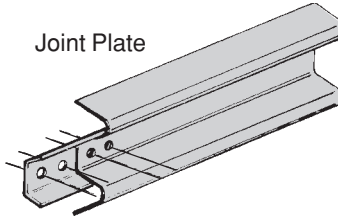
Quarter bend terminal



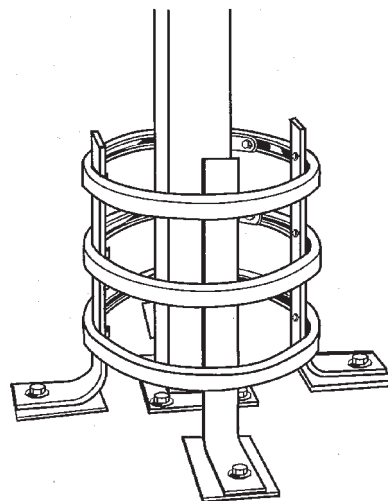
90° Bend



Joint Plate



MONOSTRUT RAIL COLUMN UNIT



Supporting columns can easily be protected using Monostrut curved rails with a radius as tight as 400mm.